

Spanish Championship Six Metre Class

Sanxenxo (Spain), September 10 to 12, 2021

SAILING INSTRUCTIONS (SI)

The **6mR Spanish Championship** will be held in the waters of the Pontevedra estuary from the **10th to the 12th of September, 2021** (both inclusive), being organized by the **Real Club Náutico de Sanxenxo (RCNS)** and the **Asociación de Armadores de la Clase 6m de España** by delegation of the Real Federación Española de Vela (RFEV).

The notation [DP] means that a breach of that rule will not be ground for protests by a boat. This changes RRS 60.1 (a).

1. RULES

1.1 The Regatta will be governed by the rules as defined in the Racing Rules of Sailing (RRS) 2021-2024.

1.2 [DP] The Equipment Rules of World Sailing (ERS).

1.3 [DP] The International Six Metre Class Rating Rules.

1.4 RRS 90.3 (e) will be applied, except that the words "24 hours" will be substituted by "60 minutes".

1.5 Appendix P of the RRS will apply, as changed by SI 13.1.

1.6 In RRS 44.2 insert after the first sentence: However, if the offset mark has to be

rounded, a boat may not take a penalty in the zone around Mark 1 or on the leg between Mark 1 and Mark 2 (offset), until she has left the offset mark.

1.7 [NP][DP] **Special Rules.**

- (a) Boats shall not put trash in the water. Trash may be placed aboard and then disposed in the containers on land.
- (b) Each participating boat may be requested by the organizing authority to carry aboard cameras, sound and a positioning system device.
- (c) Each boat must have on board a smartphone with the app eStela installed and in operation during the races. The organizers will provide the access code for each boat.

1.8 [NP][DP] All competitors and staff will follow any reasonable instruction given by a Race Committee Official.

2. NOTICES TO COMPETITORS

2.1 Notices to competitors will be posted on the Official Notice Board (ONB) located at the Race Office, downstairs at the RCNS, and also on the Official Virtual Notice Board at the website of the event: www.regatareyjuancarlos.com

3. CHANGES TO SAILING INSTRUCTIONS

3.1 Any changes to the SIs will be posted no later than 2 hours before the warning signal of the first race to which they apply, except that any change to the schedule of races will be posted by 20h00 the day before it will take effect in both the physical and virtual ONB.

4. SIGNALS MADE ASHORE

4.1 Signals made ashore will be displayed on the Signal Mast located on the terrace of the 3rd floor of the club house.

4.2 When AP Flag is displayed ashore, the expression “1 minute” in the definition of the race signals is replaced with “not less than 40 minutes”. (This changes Signal AP of the Race Signals of RRS)

4.3 Numeral pennant 1 or numeral pennant 2 with one sound displayed at least 60 minutes before the time for the first warning signal or not later than the time the AP flag is lowered, whatever happens later, means: ‘Races will be sailed in the race area 1 or 2 respectively’.

5. RACE SCHEDULE

5.1 Racing programme.

Day 1	Friday, 10 th September	10h00 -12h00 Registration 14h00 Warning Signal 1 st race of the day
Day 2	Saturday, 11 th September	12h00 Warning Signal 1 st race of the day
Day 3	Sunday, 12 th September	12h00 Warning Signal 1 st race of the day 16h00 Time limit

5.2 Six races are scheduled. Two races per day are scheduled; additional races may be sailed on condition that the racing programme of the event will not become more than one race ahead of schedule.

5.3 On Sunday 12th of September no warning signal will be displayed after 16h00.

5.4 There will be separate starts for both divisions (Open and Classics).

5.5 The warning signal for a race in the same day will be made as soon as possible. To alert boats that a race or sequence of races will begin soon, an orange flag will be displayed with one sound at least five minutes before the warning signal is made.

6. CLASS FLAGS

6.1 The class flag for OPEN Division will be **D (Delta)**



6.2 The class flag for CLASSIC Division will be **E (Echo)**



7. RACING AREAS

7.1 Appendix A shows the approximate location of the racing area, set in the waters of the Pontevedra estuary.

The starting area will be located as indicated in Appendix A, with two possible race areas (1 and area 2). The designated race area will be communicated as per the SI 4.3

7.2 The starting area is defined as the rectangle covering an area of 100 metres to leeward and to windward of the starting line, and 50 metres outwards of each end of the line.

7.3 The Race Course is defined as the surface of a polygon whose edge exceeds by 100 meters the shortest theoretical course that a boat could make in racing.

8. COURSES

8.1 Appendix B shows the W/L courses, including the order in which the marks are to be passed or rounded, and the side on which each mark has to be left.

8.2 No later than the warning signal the Race Committee will may signal the approximate bearing to the first mark, broadcasting this information also via VHF 69.

8.3 Depending on the weather conditions, the distance of each leg (except offset 1-2) will be between 1.3 and 2.0 nautical miles in order to achieve the intended duration of the race.

8.4 The races may be shortened only when a minimum of three legs have been sailed (not taking into account offset 1-2).

8.5 The gate (3S/3P) may be substituted by a single mark, in that case this one shall be left to PORT.

9. MARKS

9.1 **COURSE MARKS:** Marks 1, 2 & 3 (S/P) will be conical yellow buoys.

9.2 **CHANGE OF COURSE MARK** will be a conical red buoy.

9.3 **STARTING MARKS:** Race Committee vessel at the starboard end of the line and pin boat on the port end, both displaying an orange flag.

9.4 **FINISHING MARKS:** Race Committee vessel displaying a blue flag and a cylindrical orange buoy.

9.5 A Race Committee vessel announcing a change of course -as indicated on SI 11.2- is considered as a course mark.

10. THE START

10.1 **Starting line:** The starting line will be between the masts displaying orange flags in the starting marks.

10.2 A boat starting later than 4 minutes after her starting signal will be scored Did Not Start (DNS) without a hearing. This changes RRS A4 and A5.1

10.3 [NP](DP) Boats whose warning signal has not been made shall avoid the starting area and either side of the starting line (see SI 7.3)

10.4 In the case of unfavourable conditions the Race Committee boat may maintain her position by using the engine.

11. CHANGE OF THE NEXT LEG OF THE COURSE

11.1 To change the next leg of the course, the Race Committee will lay a new RED mark (or move the finishing line) and will remove the original mark as soon as practicable or move the gate marks.

In order to maintain the course configuration, any mark that needs to be rounded may be repositioned after rounding the new mark.

When in a subsequent change a new mark is replaced, it will be replaced by a mark with the original colour and shape.

11.2 Except at a gate, boats shall pass between the race committee boat signalling the change of the next leg and the nearby mark, leaving the mark to port and the race committee boat to starboard.

11.3 A change to the position of mark 1 will remove the mark 2 (Offset).

12. THE FINISH

12.1 The finishing line will be between a staff in a RC vessel displaying a blue flag and a cylindrical orange buoy.

12.2 The Race Committee boat at the finishing line can maintain her position by using the engine.

13. PENALTY SYSTEM

13.1 RSS 44.1 and P2.1 are changed so that the Two-Turns Penalty is replaced by the One-Turn Penalty.

13.2 A boat that has taken a penalty or has retired must complete an acknowledgement form at the race office within the protest time limit or as soon as possible (addition to RRS 44).

14. TIME LIMITS AND TIME TARGETS

14.1 Time limits and target times will be as follows:

Class	Time limit	Mark 1 time limit	Target time
Open	150 min	50 min	80 min
Classics	150 min	55 min	80 min

14.2 If no boat has passed Mark 1 within the Mark 1-time limit, the race will be abandoned. Failure to meet the target time will not be grounds for redress. This changes RRS 62.1(a).

14.3 Boats failing to finish within 30 minutes after the first boat of each class sails the course and finishes, will be scored DNF without a hearing. This change RRS 35, A4 and A5.1

15. REQUESTS FOR REDRESS

15.1 A boat that finishes and that has the intention to protest shall inform (by voice or via VHF 69) the RC boat on the finish line right after finishing until her intention has been recognized by the RC and identifying those boats she intends to protest against. Addendum to RRS 61.1 (a).

15.2 A boat that retires or does not finish and has the intention to protest shall inform the Race Office (downstairs at the club house) right after her arrival on shore by indicating the sail number of the boat she intends to protest against.

Protest forms are available at the Race Office.

Protests and requests for redress or reopening shall be delivered there within the protest time limit.

15.3 The protest time limit is 60 minutes after the last boat has finished the last race of the day or the Race Committee signals no more racing that day, whichever is the later. The exact time will be immediately indicated in both the physical and virtual ONB.

15.4 Notices will be posted no later than 15 minutes after the protest time limit on the ONBs to inform competitors of hearings in which they are parties or named as witnesses. Hearings will be held in the Jury room, located near from the Race Office.

15.5 A list of boats that have been penalized for breaking RRS 42 and under SI 1.6 will be posted.

16. SCORING

16.1 Six races are scheduled. The Spanish Championship will be valid if two races have been completed.

16.2 a) When fewer than six races have been completed, a boat's series score will be the total of her race scores.

b) When six races have been completed, a boat's series score will be the total of her race scores excluding her worst score.

16.3 There will be two independent rankings: Open and Classics.

16.4 To request correction of an alleged error in posted race or series results, a boat shall complete a 'scoring enquiry form' available at the Race Office.

17. SAFETY REGULATIONS [NP][DP]

17.1 Boats arriving for any reason at a point ashore other than the RCNS are requested to report immediately to:

RCN Sanxenxo	609 98 88 86	VHF 09
PRO	608 82 30 36	VHF 69
Maritime Rescue Coordination Center	900.202.202	VHF 10 / 16

17.2 Boats not leaving the harbour for the races of the day, not starting, or retiring from a race shall inform the Race Committee as soon as possible. If they are on the water, they will inform via VHF 69.

17.3 All boats shall return only to their allocated moorings.

17.4 To facilitate the search and rescue operations, boats asking for help are requested to signal their position and their identifying external details.

17.5 The Maritime Rescue Coordination Center broadcasts a local weather report daily on VHF 11 at the following local times:

08h15 **12h15** **16h15** **20h15**

17.6 All competitors shall carefully comply with this sailing instruction. Otherwise they can be requested to pay the expenses of search and rescue operations.

18. REPLACEMENT OF CREW AND EQUIPMENT [NP]

18.1 Boats may be able to replace a crew member during the championship with prior approval of the Race Committee. Replacement of another crew member will not be allowed without prior approval of the Race Committee.

18.2 Substitution of damaged or lost equipment that must be measured, is only allowed with approval of the Technical Committee.

19. EQUIPMENT AND MEASUREMENT CHECKS

19.1 A boat may be inspected by the Technical Committee at any time for compliance with the class rules.

20. OFFICIAL BOATS

20.1 The official boats will be identified by displaying flags as follows:

Race Committee Boat	Yellow Flag
Jury boats	White flag with letters "JURY" in black
Technical Committee boat	White flag with letters "TC" in black

21. SUPPORT BOATS (DP) [NP]

21.1 All support boats must be clearly identifiable to the participating yacht they support. Team leaders, coaches and other support personnel shall stay outside areas where boats are racing from the time of the warning signal for the first class to start until all boats have finished or the Race Committee signals a postponement, a general recall or an abandonment.

22. HAUL-OUT RESTRICTIONS (DP) [NP]

22.1 From 20h00 on the day before the beginning of the races and until after the last race of the regatta, boats shall not be hauled out, except with and according to the terms of prior written permission of the PRO.

22.2 In the event of an urgent need to haul-out, the person in charge of the boat will do everything possible to communicate via radio, telephone or otherwise with the PRO and, if this is not achieved, authorization may be requested later.

23. RADIO COMMUNICATION (DP)

23.1 Except in an emergency, a boat shall neither make voice nor data transmissions while racing nor receive voice or data communications not available to all boats.

23.2 The Race Committee will make use of VHF 69 to make announcements to competitors.

23.3 30 minutes before the time of the warning signal for the first race of the day, the Race Committee will emit, if possible, a time check in that channel.

24. PRIZES

24.1 Plaque of the RFEV as 6mR Spanish Champion will be awarded to the first team of each class (Open and Classics) whose crew is formed only with Spanish sailors or foreign sailors legally resident in Spain.

The complete list of trophies will be posted on the Official Notice Board before the start of the first race of the championship.

24.2 The Social Events scheduled during the racing days will be posted on the ONB

25. DISCLAIMER OF LIABILITY

25.1 All competitors participate in the regattas entirely at their own risk and responsibility. See RRS 3 – Decision to Race.

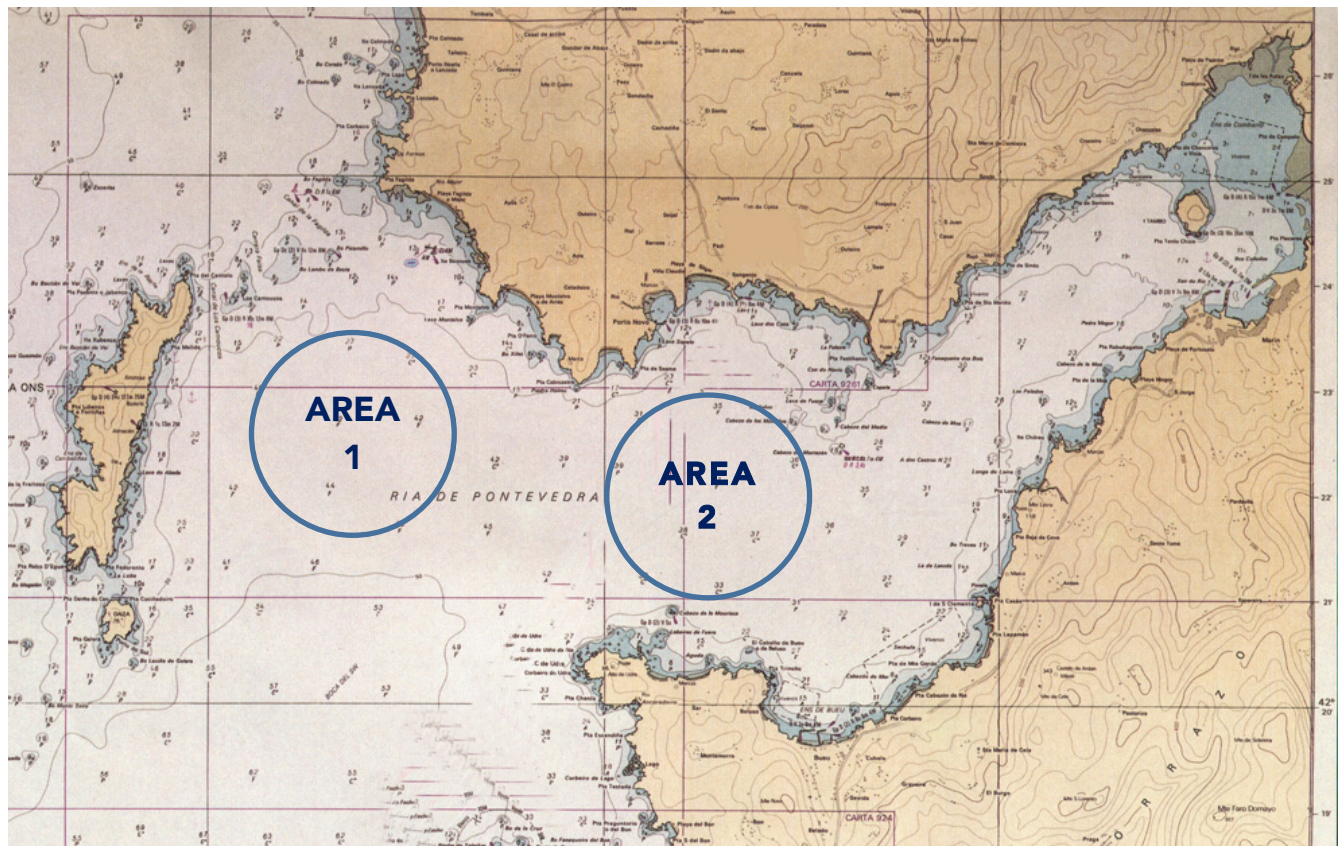
APPENDIX A

RACING AREA

Race Areas following a preference order

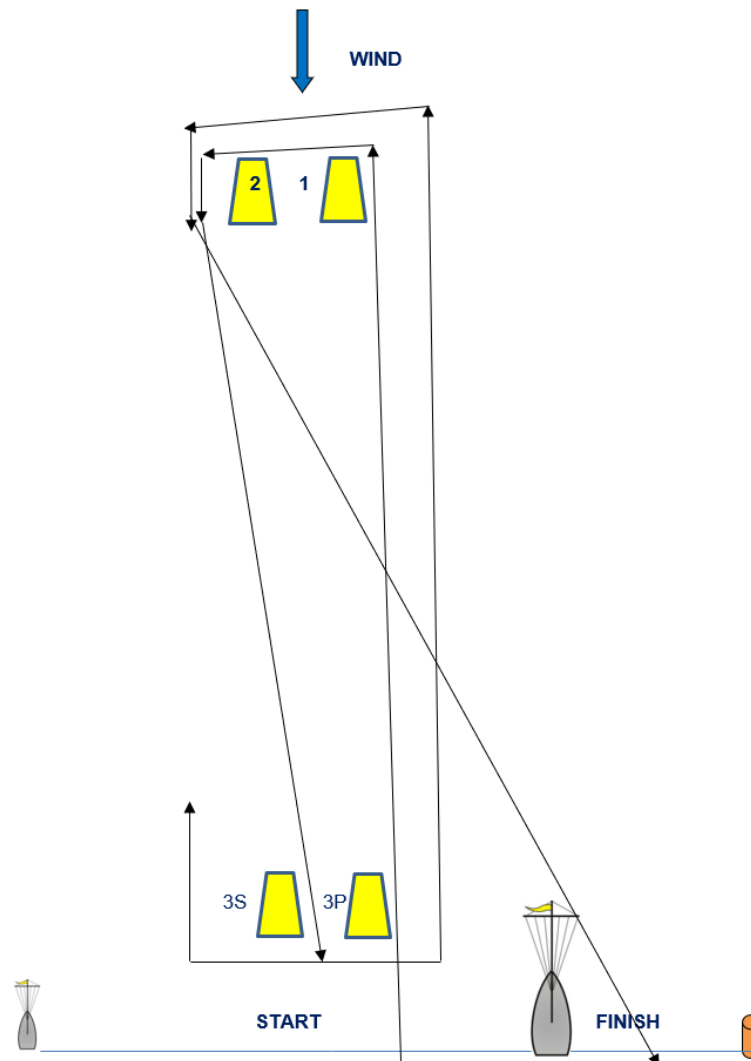
1 = Racing area Pennant 1

2 = Racing area Pennant 2



APPENDIX B

RACE COURSE



Race Course:

Start - Mark 1 – Mark 2 - Mark 3S/3P (Gate) - Mark 1 – Mark 2 - Finish

Marks 1, 2 & 3P shall be left to port

Mark 3S shall be left to starboard