



2nd Event – 6mR Spanish League Circuit 2024 Six Metre Class

April 20th, 21st – 2024
REAL CLUB NÁUTICO DE SANXENXO

SAILING INSTRUCTIONS (SI)

The 2nd Event of the 6mR Spanish League Circuit 2024 for Six Metre Class, will be held in the waters of the Pontevedra estuary the 20 and 21 of April 2024, being organized by the Real Club Náutico de Sanxenxo (RCNS) and the Asociación de Armadores de la Clase 6m de España (Spanish Six Metre Owners Association).

In all rules governing this regatta, the notation [NP] means that a breach of that rule will not be ground for protests by a boat. This changes RRS 60.1 (a).

1. RULES

1.1 The Regatta will be governed by the rules as defined in the Racing Rules of Sailing (RRS) 2021-2024.

1.2 [DP] The Equipment Rules of World Sailing (Appendix D).

1.3 [DP] The International Six Metre Class Rating Rules.

1.4 In RRS 44.2 insert after the first sentence: However, if the offset mark has to be rounded, a boat may not take a penalty in the zone around Mark 1 or on the leg between Mark 1 and Mark 2 (offset), until she has left the offset mark. This changes Rule 44.2

1.5 [NP][DP] Special Rules.

- (a) Boats shall not put trash in the water. Trash may be placed aboard and then disposed in the containers on land.
- (b) Each participating boat may be requested by the organizing authority to carry aboard cameras, sound and a positioning system device.
- (c) Each boat must have on board a smartphone with the app eStela installed and in operation during the races. The organizers will provide the access code for each boat.

2. NOTICES TO COMPETITORS

2.1 Notices to competitors will be posted on the Official Notice Board (ONB) located at the Race Office, downstairs at the RCNS, and also on the Official Virtual Notice Board at the link:

[https://escora.rfgvela.es/toa/vi-liga-espanola-6mr-\(serie-2\)-abril-2024](https://escora.rfgvela.es/toa/vi-liga-espanola-6mr-(serie-2)-abril-2024)

2.2. The link to register for this 1st Regatta, as indicated in point 5.1 of the Notice of Race, will be:

[https://escora.rfgvela.es/entries/vi-liga-espanola-6mr-\(serie-2\)-abril-2024](https://escora.rfgvela.es/entries/vi-liga-espanola-6mr-(serie-2)-abril-2024)



3. CHANGES TO SAILING INSTRUCTIONS

3.1 Any changes to the Sailing Instructions will be posted no later than two (2) hours before the warning signal of the first race of the day to which they apply, except that any change to the schedule of races will be posted by 20h00 the day before it will take effect in both the physical and virtual ONB.

4. SIGNALS MADE ASHORE

4.1 Signals made ashore will be displayed on the Signal Mast located on the terrace of the 3rd floor of the clubhouse.

4.2 When AP Flag is displayed ashore, the expression “1 minute” in the definition of the race signals is replaced with “not less than **40 minutes**” (This changes Signal AP of the Race Signals of RRS).

4.3 A white flag with the number 1 or number 2 with one sound displayed at least 60 minutes before the time for the first warning signal or not later than the time the AP flag is lowered, whatever happens later, means: ‘Races will be sailed in the race area 1 or 2 respectively’.

5. RACE SCHEDULE

5.1 Racing programme:

Day 1	Saturday, 20 th April	10h00 - 12h00 Race Office opens / Registration 11h00 Skippers Briefing 13h00 Warning signal 1 st race of the day
Day 2	Sunday, 21 st April	12h30 Warning signal 1 st race of the day 15h30 Time limit warning signal

5.2 Four races are scheduled. Two races per day are scheduled; additional races may be sailed on condition that the racing programme of the event will not become more than one race ahead of schedule.

5.3 On Sunday April 21st no warning signal will be displayed after 15h30 (being understood that such a warning signal from one of the classes entails the continuity of the procedure for the other class.)

5.4 There will be separate starts for both divisions (Open and Classics).

5.5 The warning signal for a race in the same day will be made as soon as possible. To alert boats that a race or sequence of races will begin soon, an orange flag will be displayed with one sound at least five minutes before the warning signal is made.

5.6 Due to exceptional reasons and depending on the weather conditions, the Race Committee will be able to move the warning signal of the first race forward on Sunday (in principle to 10h00), warning the participants not later than 20h00 on the previous day.

6. CLASS FLAGS

6.1 The class flag for OPEN Division will be **D (Delta)**



6.2 The class flag for CLASSIC Division will be **E (Echo)**





7. RACING AREAS

7.1 **Appendix A** shows the approximate location of the racing area, set in the waters of the Pontevedra estuary.

The starting area will be located as indicated in Appendix A, with two possible race areas (1 and 2). The designated race area will be communicated as per the SI 4.3

7.2 The starting area is defined as the rectangle covering an area of 100 metres to leeward and to windward of the starting line and 50 metres outwards of each end of the line.

7.3 The Race Course is defined as the surface of a polygon whose edge exceeds by 100 meters the shortest theoretical course that a boat could make in racing.

8. COURSES

8.1 **Appendix B** shows the W/L courses, including the order in which the marks have to be passed or rounded, and the side on which each mark has to be left.

8.2 No later than the warning signal, the Race Committee will may signal the approximate bearing to the first mark from the starting line, broadcasting this information also via **VHF 69**.

8.3 Depending on the weather conditions, the distance of each leg (except offset 1-2) will be between 1.3 and 2.0 nautical miles in order to achieve the intended duration of the race.

8.4 The races may be shortened only when a minimum of three legs have been sailed (not taking into account offset 1-2).

8.5 The gate (3S/3P) may be substituted by a single mark, in that case this one shall be left to PORT.

8.6 If the weather conditions condition this, coastal courses may be established and this will be decided and notified on the official VHF channel 69 from 20 minutes before the corresponding warning signal, as well as it will be displayed before the warning signal on a blackboard with the inscription "Appendix C" on board the RC boat. (Situation of the fixed marks for coastal races in Appendix C).

8.7 On coastal courses, if the Race Committee hoists a green or red flag no later than the warning signal, it means that there is an offset mark, which will be left to starboard or port, respectively.

9. MARKS

9.1 **COURSE MARKS:** Marks 1, 2 & 3 (S/P) will be conical **yellow** buoys.

9.2 **CHANGE OF COURSE MARK** will be a conical **red** buoy.

9.3 **STARTING MARKS:** Race Committee vessel displaying an orange flag at the starboard end of the line^[SEP] and conical yellow buoy (3P) at the port end.

9.4 **FINISHING MARKS:** Race Committee vessel displaying a **blue flag** and a cylindrical **orange** buoy.^[SEP]

9.5 **OFFSET MARK** (Coastal courses): Inflatable yellow buoy.

10. THE START

10.1 **Starting line:** The starting line will be between a staff on the Race Committee vessel displaying an orange flag at the starboard end of the starting line^[1] and an inflatable conical yellow buoy at the port end.

Minutes before starting signal	Visual signal displayed	Visual signal removed	Sound signal	Means
5	Class flag		1	Warning signal
4	P, I, U or Black flag		1	Preparatory signal
1		P, I, U or Black flag	1 long	1 minute
0		Class flag	1	Starting signal

10.2 A boat starting later than **4 minutes** after her starting signal will be scored Did Not Start (DNS) without a hearing. This changes RRS A4 and A5.1

10.3 [NP](DP) Boats whose warning signal has not been made shall avoid the starting area and either side of the starting line (see SI 7.2)

11. CHANGE OF THE NEXT LEG OF THE COURSE

11.1 To change the position of the next mark of the course, the Race Committee will lay a new RED mark (or move the finishing line) and will remove the original mark as soon as practicable or move the gate marks.

When in a subsequent change a new mark is replaced, it will be replaced by a mark with the original colour and shape.

11.2 Except at a gate, boats shall pass between the race committee boat signalling the change of the next leg and the nearby mark.

11.3 A change to the position of mark 1 will remove the mark 2 (Offset).

12. THE FINISH

12.1 The finishing line will be between a staff in a RC vessel displaying a blue flag and a cylindrical orange buoy.

13. PENALTY SYSTEM

13.1 RSS 44.1 is changed so that the Two-Turns Penalty is replaced by the One-Turn Penalty.

14. TIME LIMIT AND TIME TARGET

14.1 Time limits and target times will be as follows:

Class	Time limit	Mark 1 time limit	Target time
Open	100 min	35 min	60 min
Classics	100 min	40 min	60 min

14.2 If no boat has passed Mark 1 within the Mark 1-time limit, the race will be abandoned. Failure to meet the estimated target time will not be ground for redress. This changes RRS 62.1(a)^[1].



14.3 Boats failing to finish within 30 minutes after the first boat of each class sails the course and finishes, will be scored Did Not Finish (DNF) without a hearing. This change RRS 35, A4 and A5.1

14.4 For coastal courses, the time limit is 30 minutes per nautical mile for the first boat that sails the course and finishes it, and 15 minutes after the leading boat finishes for remainder competitors.

15. REQUESTS FOR REDRESS

15.1 A boat that finishes and has the intention to protest shall inform (by voice or via VHF 69) the RC boat on the finish line right after finishing until her intention has been recognized by the RC and identifying those boats she intends to protest against. Addendum to RRS 61.1 (a).

15.2 A boat that retires or does not finish and has the intention to **protest** shall inform the Race Office (downstairs at the clubhouse) right after her arrival on shore by indicating the sail number of the boat she intends to protest against.

Protest forms will be available at the Race Office.

Protests and requests for redress or reopening shall be delivered there within the protest time limit. [SEP]

15.3 The protest time limit is 120 minutes after the last boat of each division has finished the last race of the day or the Race Committee signals no more racing that day, whichever is the later. The exact time will be immediately indicated in both the physical and virtual ONB.

15.4 Notices will be posted on the ONBs no later than 15 minutes after the protest time limit in order to inform competitors of hearings in which they are parties or named as witnesses. Hearings will be held in the Jury Room, located near from the Race Office.

16. SCORING

16.1 Four races are scheduled.

16.2 a) Boat's series score will be the total of her race scores.

b) For the General Scoring of the 2024 6mR Spanish League Circuit, each boat will discard her worst score every six (6) valid races held.

16.3 There will be two independent rankings: Open and Classics.

16.4 To request correction of an alleged error in posted race or series results, a boat shall complete a 'scoring enquiry form' available at the Race Office.

17. SAFETY REGULATIONS [NP][DP]

17.1 Boats arriving for any reason at a point ashore other than the RCNS are requested to report immediately to:

RCNS Coordination	609 98 88 86	VHF 09
-------------------	--------------	--------



warning signal for the first class to start until all boats have finished or the Race Committee signals a postponement, a general recall or an abandonment.

22. HAUL-OUT RESTRICTIONS [DP] [NP]

22.1 From 20h00 on the day before the beginning of the races, boats shall not be hauled out except with and according to the terms of prior written permission of the PRO.

22.2 In the event of an urgent need to haul-out, the person in charge of the boat will do everything possible to communicate via radio, telephone or otherwise with the PRO and, if this is not achieved, authorization may be requested later.

23. RADIO COMMUNICATION [NP] [DP]

23.1 Except in an emergency or to accomplish a rule, a boat shall neither make voice nor data transmissions while racing nor receive voice or data communications not available to all boats.

23.2 The Race Committee will make use of **VHF 69** to make announcements to competitors.

23.3 30 minutes before the time of the warning signal for the first race of the day, the Race Committee will emit, if possible, a time check in that channel.

24. PRIZES

24.1 The complete list of trophies will be posted on the Official Notice Board before the start of the first race of the event.

24.2 The Social Events scheduled during the days of the tests will be published in the TOA.

25. DISCLAIMER OF LIABILITY

25.1 All competitors participate in the regatta entirely at their own risk and responsibility. See RRS 3 – Decision to Race.

ADDITIONAL INFORMATION – TIDES AND SUNSET

SUNSET TIMES (local time)

Saturday 04/20/24 = 21:22 h. - Sunday 04/21/24 = 21:23 h.

The tides at the estuary of Pontevedra will be (times indicated are Spanish time):

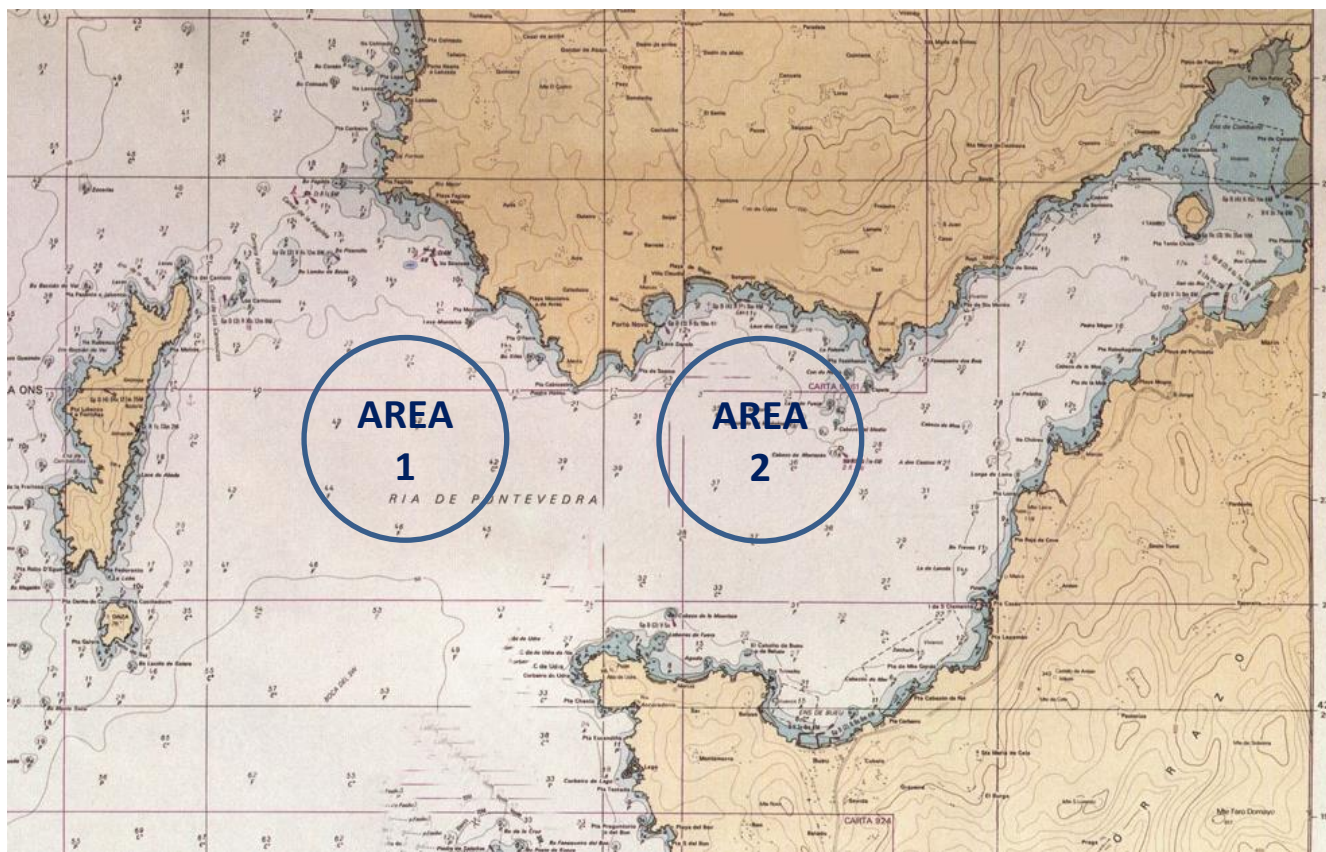
Pontevedra Estuary Saturday April 20		
	Time	Height
Low Tide	09.09	1.0
High Tide	15:19	3.0
Low Tide	21:16	1.0
High Tide		

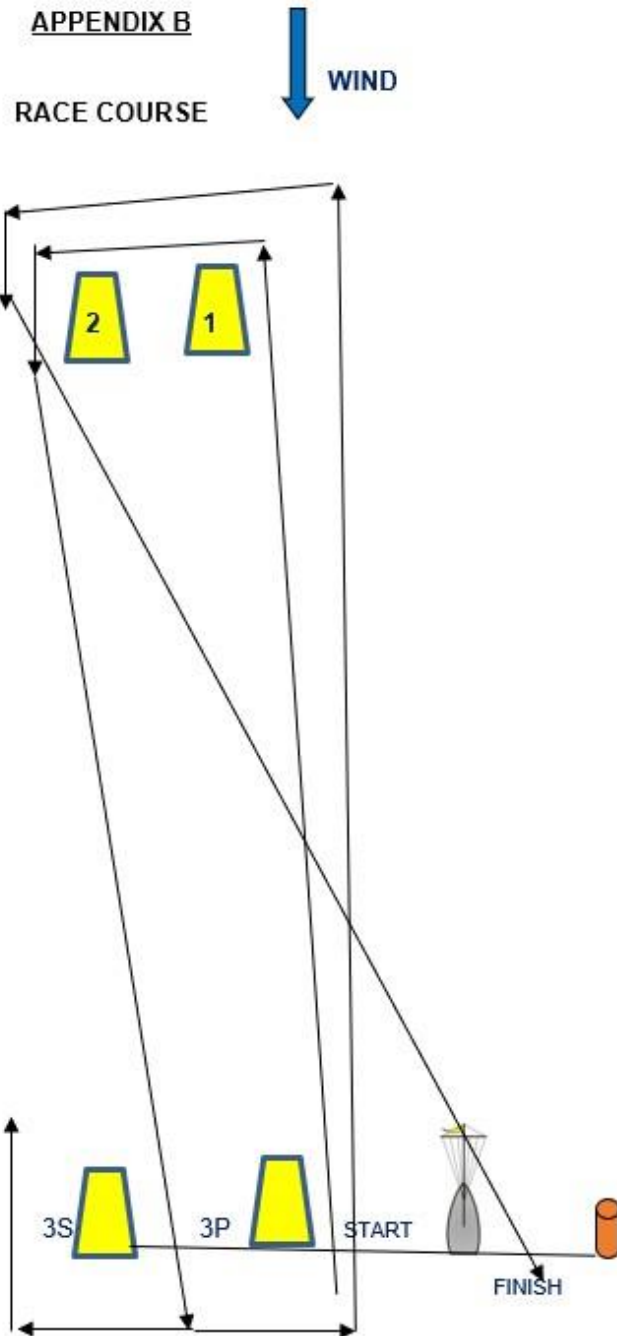
Pontevedra Estuary Sunday April 21		
	Time	Height
Low Tide	09.40	0.8
High Tide	15:50	3.2
Low Tide	21:49	0.9
High Tide		

APPENDIX A RACING AREA

Race Areas following a preference order

- 1 = White Flag with number 1
- 2 = White Flag with number 2





Race Course:

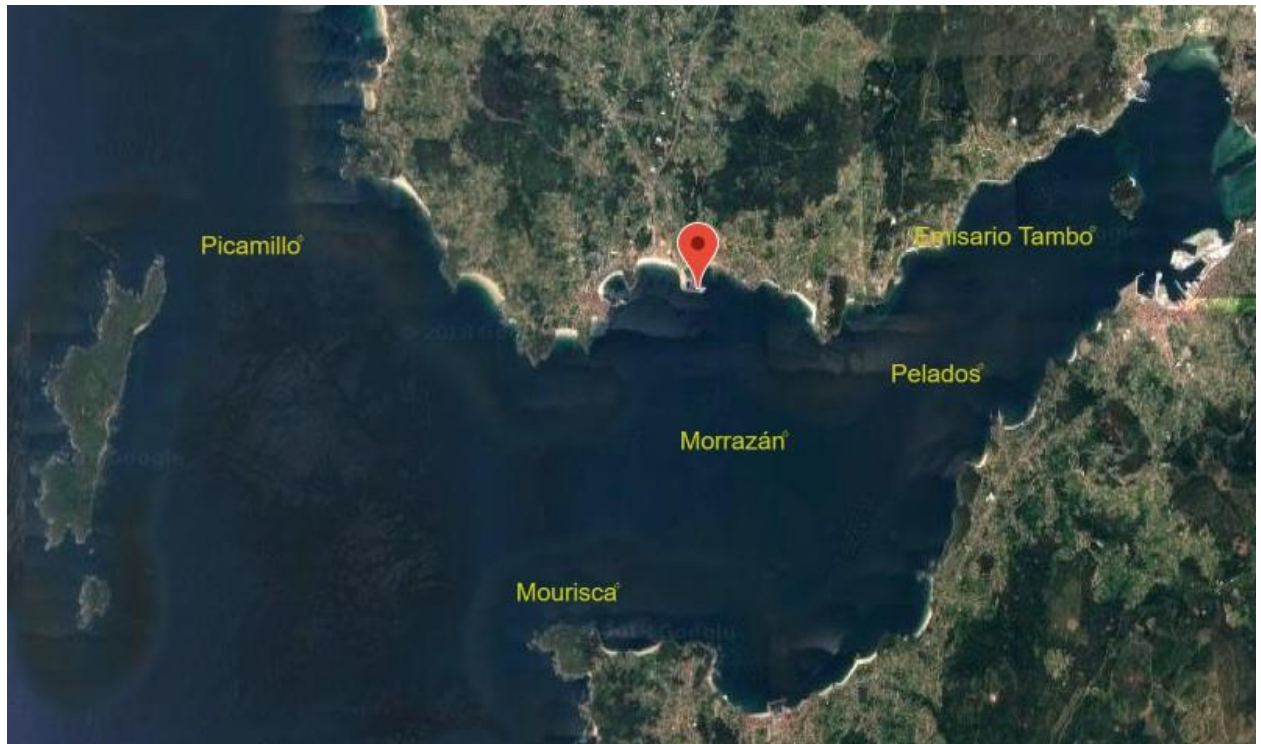
Start - Mark 1 – Mark 2 - Mark 3S/3P (Gate) - Mark 1 – Mark 2 - Finish
Marks 1, 2 & 3P shall be left to port Mark 3S shall be left to starboard

APPENDIX C

COASTAL COURSES

The situation of the fixed marks of the Pontevedra estuary which the coastal races may pass, will be:

- Mourisca (Lighthouse in front of Bueu) = N 42° 20.874' - W 008° 49.202'
- Morrazán (Red bouy at Pontevedra Estuary centre) = N 42° 22.372' - W 008° 47.016'
- Os Pelados (Bi-colour buoy in front of Aguete) = N 42° 23.033' - W 008° 44.444'
- Picamillo (Lighthouse leaving the estuary of Pontevedra) = N 42° 24.275' - W 008° 53.430'
- Emisario de Tambo – Tambo's outfall (Iron Yellow) = N 42° 24.370' - W 008° 42.968'





APPENDIX D
MINIMUM SAFETY EQUIPMENT - 6 Metre Class

1	Anchor (minimum 10 kg) with at least 30 metres of rope (minimum 10 mm)
2	Winch handle(s)
3	Hatch Covers (if needed)
4	Floor boards (in the normal sailing position)
5	Handheld VHF
6	Portable or fixed bilge pump (discharging overboard)
7	Towing rope (minimum 15 m)
8	Smartphone (for eStela tracking system)
9	Boathook & paddle
10	Lifejacket (minimum 50N and one for each crewmember)